

phytoplankton – chlorophyceae

Actinastrum hantzschii

life-form: coenobium
cell length: 10 - 24 μm
cell width: 3 - 6 μm

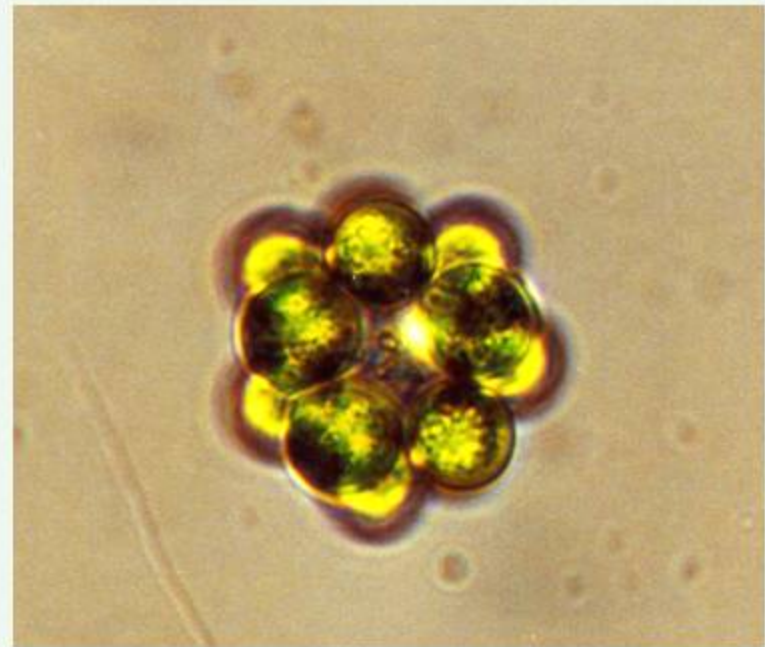
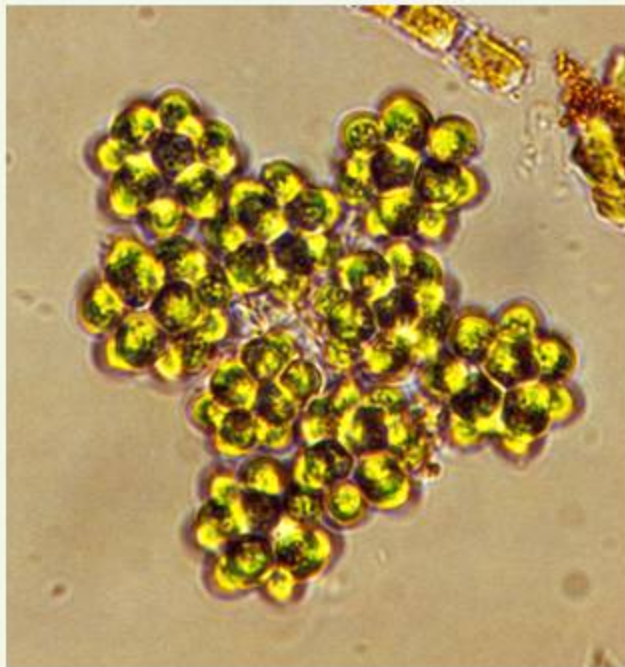


LM (Pomeranian Bight)

phytoplankton – chlorophyceae

Coelastrum microporum

life-form: coenobium
cell diameter: up to 10µm



LM (Pomeranian Bight)

phytoplankton – chlorophyceae

Desmodesmus opoliensis

life-form: coenobium
cell length: 4 - 36 μm
cell width: 2 - 9 μm



LM (Mecklenburg Bight)

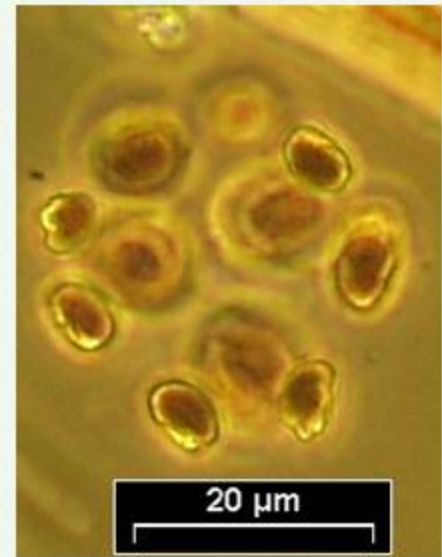


LM (Pomeranian Bight)

phytoplankton – chlorophyceae

Dictyosphaerium ehrenbergianum

life-form: in colonies
cell size: 6 – 10µm x 4 – 7µm

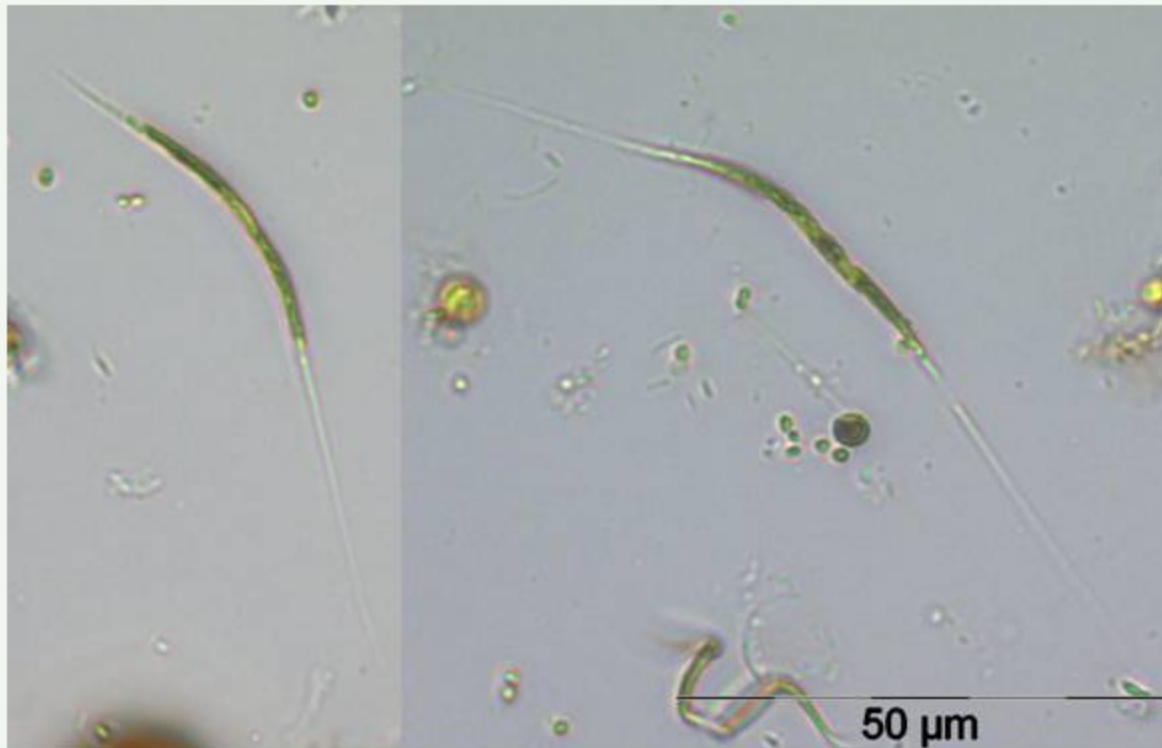


LM (Pomeranian Bight)

phytoplankton – chlorophyceae

Koliella longiseta

life-form: single cells
cell length: (50) – 100 – 140 μm
cell width: 1,5 – 3 μm



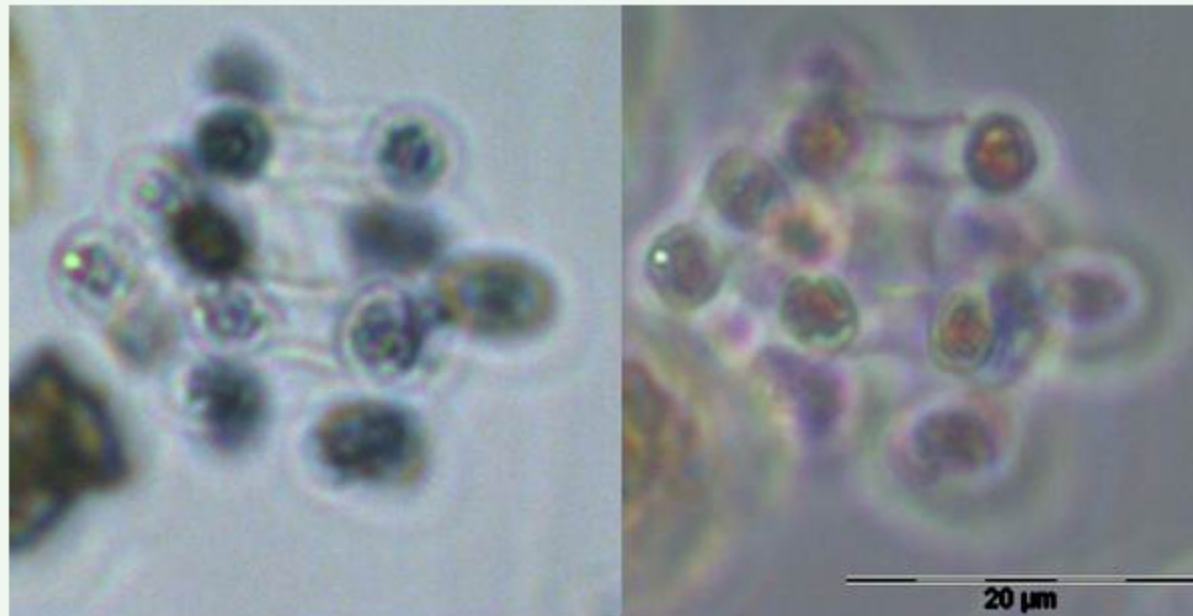
LM (Pomeranian Bight)



phytoplankton – chlorophyceae

Lobocystis planctonica

life-form: coenobium
cell shape: spheroidal or ellipsoidal
cell size: 3 - 9 μm



LM (Arkona Basin)



LM (Arkona Basin)

5 μm



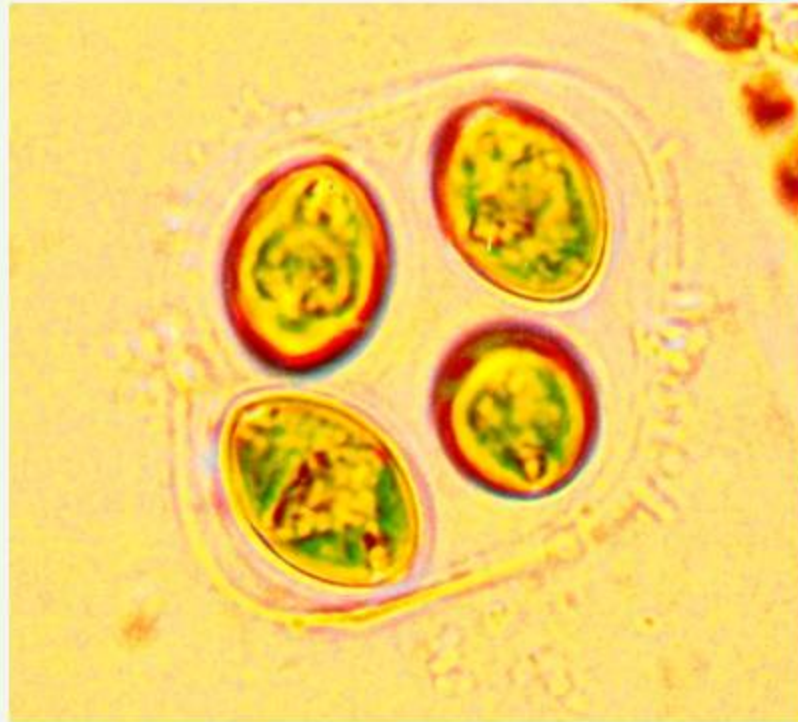
LM (Southern Baltic proper)

10 μm

phytoplankton – chlorophyceae

Oocystis sp.

abundance: summer, autumn
life-form: in coenobiums
cell length: 18 μ m
cell width: 12 μ m

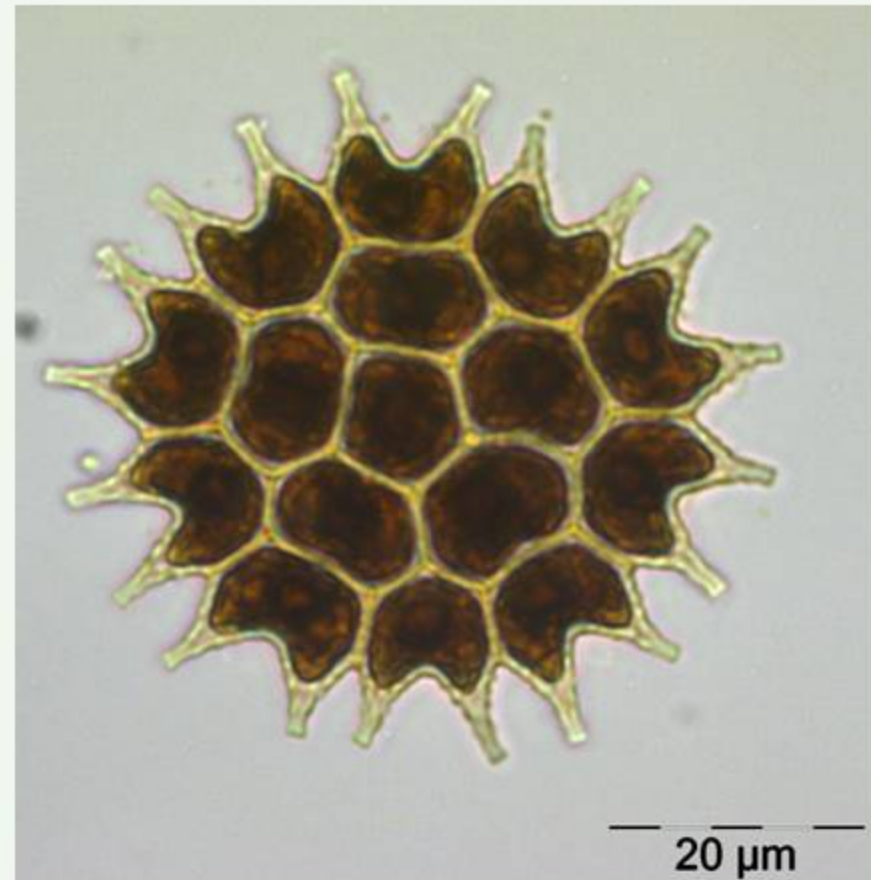
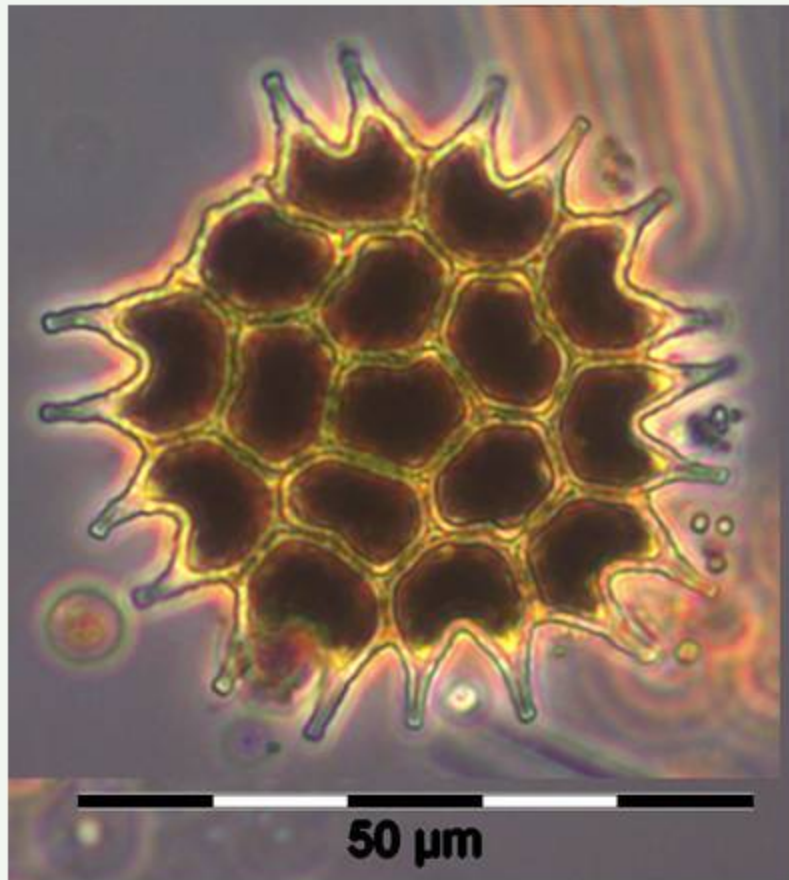


LM (Pomeranian Bight)

phytoplankton – chlorophyceae

Pediastrum boryanum var. boryanum

life-form: coenobium
coenobium-diameter: up to 208 μm

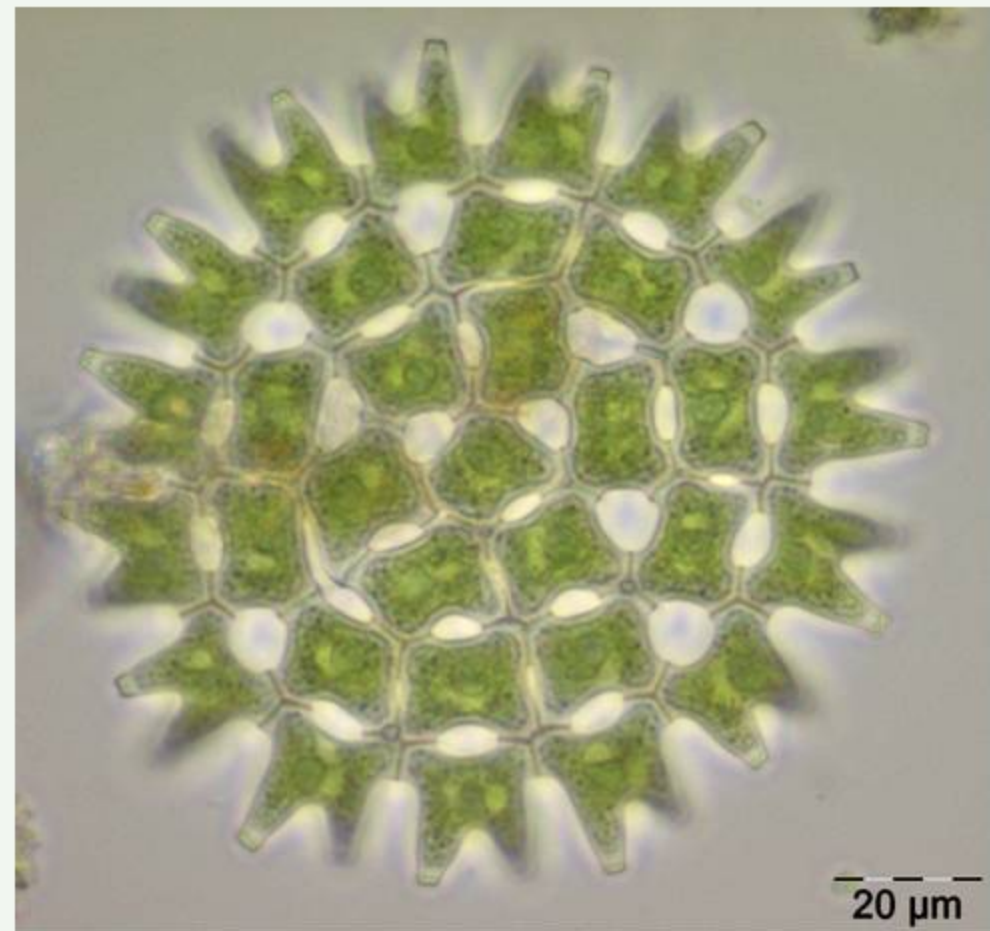
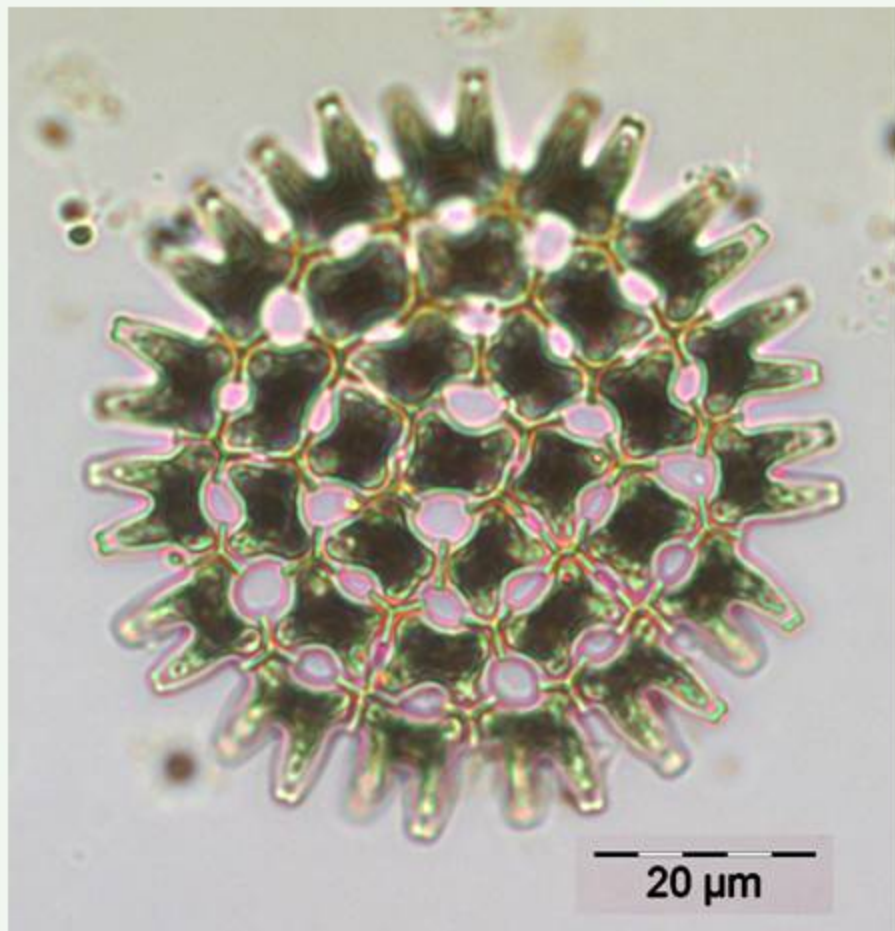


LM (Pomeranian Bight)

phytoplankton – chlorophyceae

Pediastrum duplex var. *duplex*

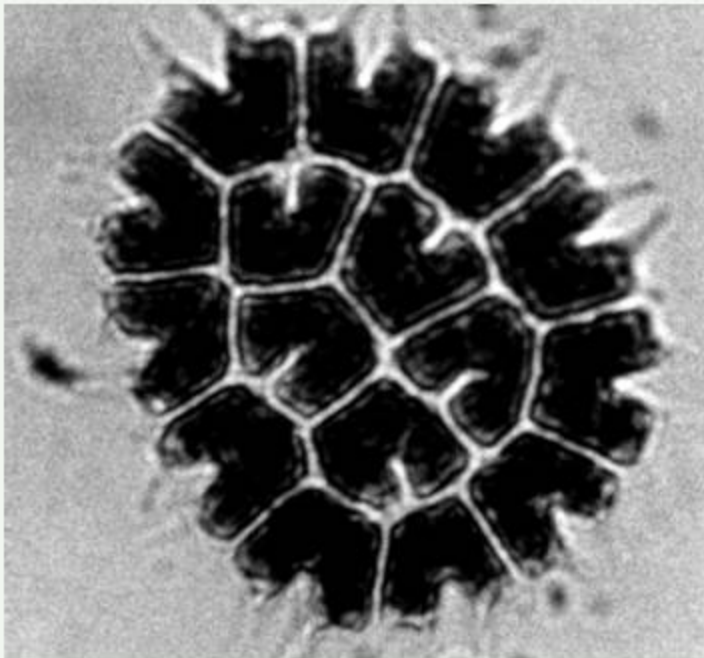
life-form: coenobium
coenobium diameter: 20 – 208 μm



phytoplankton – chlorophyceae

Pediastrum tetras

life-form: coenobium
coenobium diameter: 12 – 74 μm

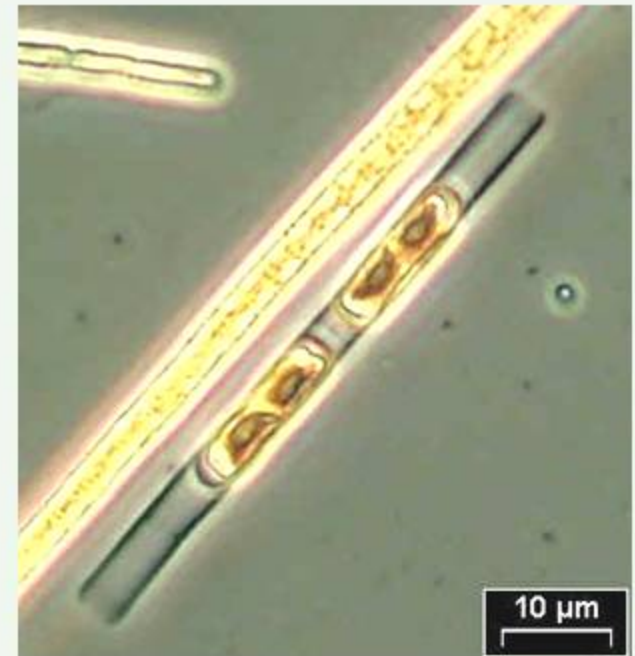


LM (Pomeranian Bight)

phytoplankton – chlorophyceae

Planktonema lauterbornii

life-form: in filaments
cell diameter: 2,5 – 4 μm
cell length: 5 – 15 μm

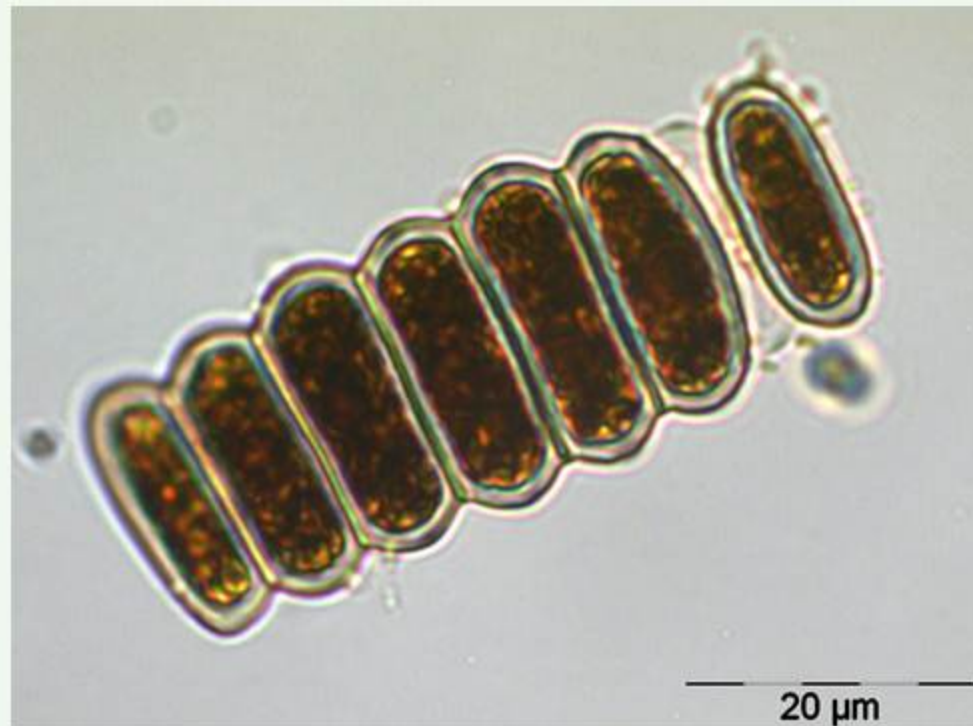


LM (Oder Bight)

phytoplankton – chlorophyceae

Scenedesmus ellipticus

life-form: coenobium
cell length: 3,5 – 20 μm
cell width: 2 – 10 μm

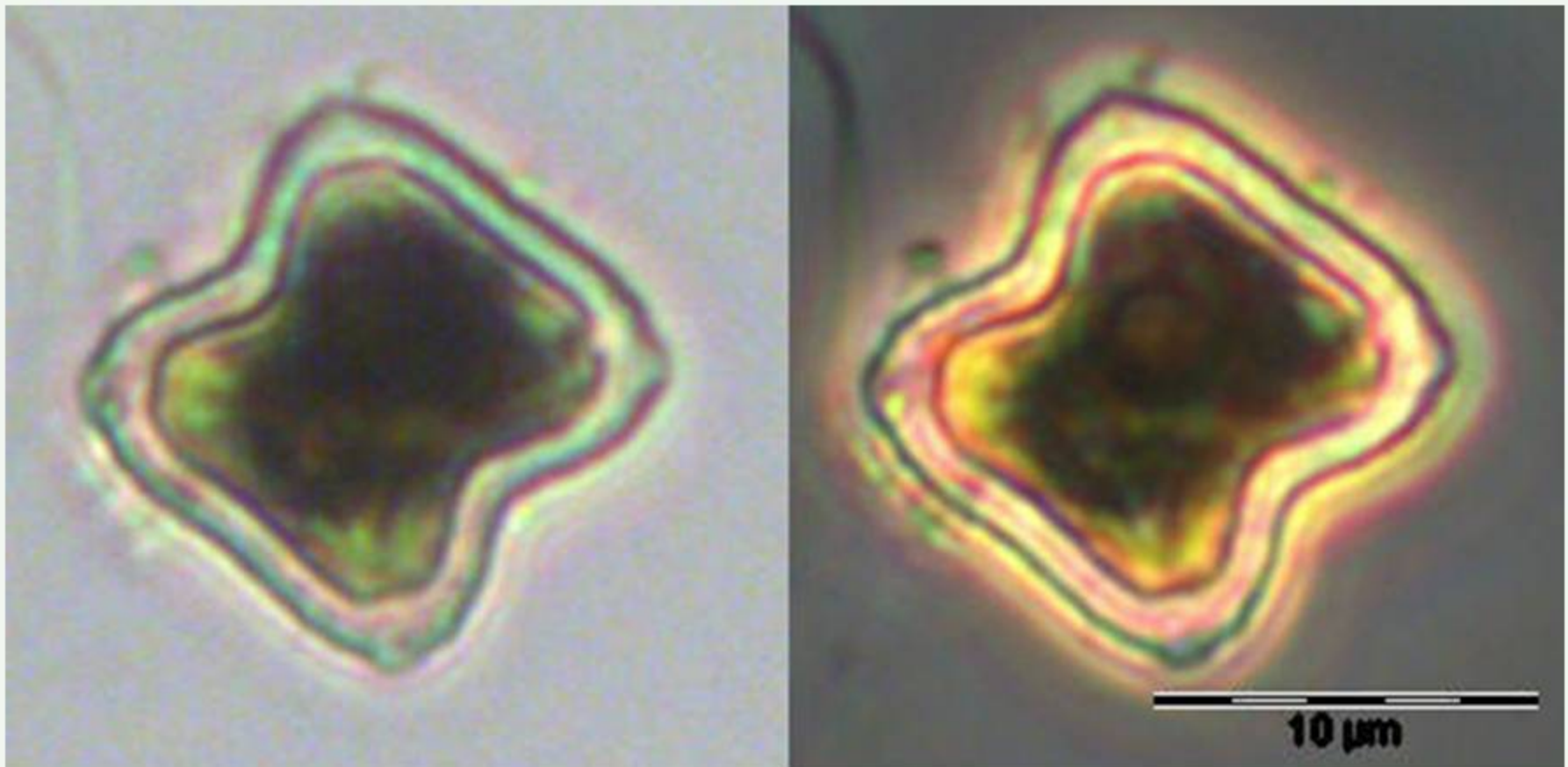


LM (Pomeranian Bight)

phytoplankton – chlorophyceae

Tetraedron minimum

life-form: solitary
cell length: 5- 13 – (17) μm
cell width: 3 – 6 μm



LM (Pomeranian Bight)